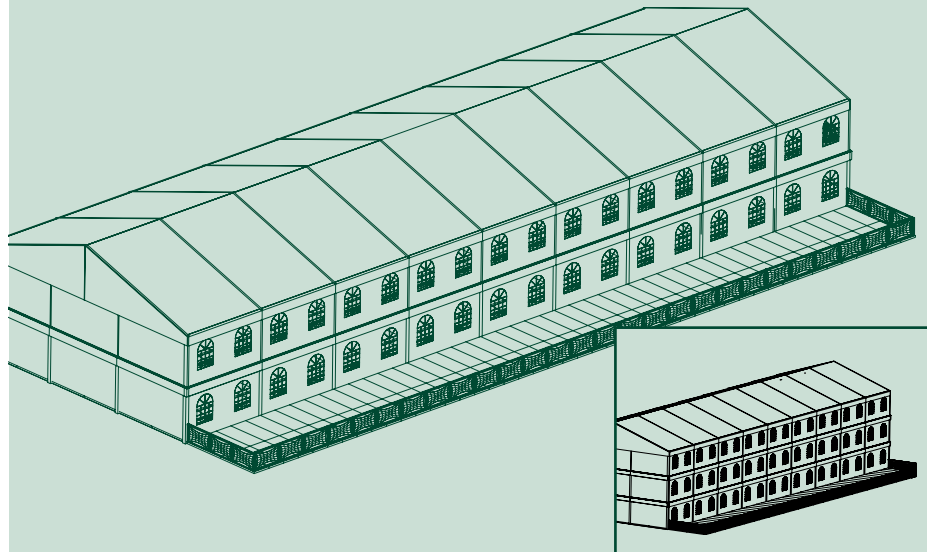


► Multi Storey Tent



- Event & Exhibition
- Tent Rental Companies

| | | | | | | | | |
|-------------------------|--------|------|------|------|------|--|--|--|
| Dubble Deck Width | 10 m | 15 m | 20 m | 25 m | 30 m | | | |
| Side height Dubble Deck | 6,38 m | | | | | | | |
| Triple Deck Width | 10 m | 15 m | 20 m | 25 m | | | | |
| Side height Triple Deck | 9,4 m | | | | | | | |



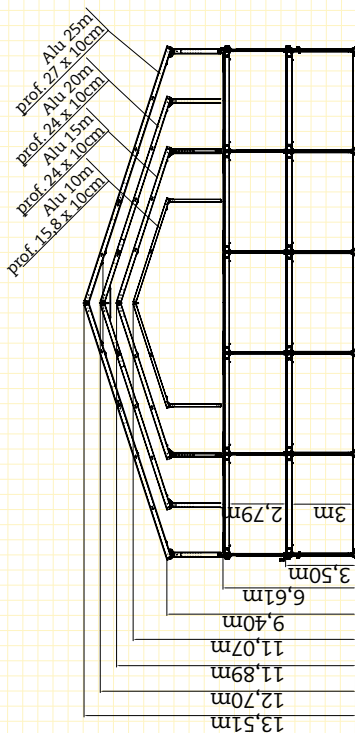
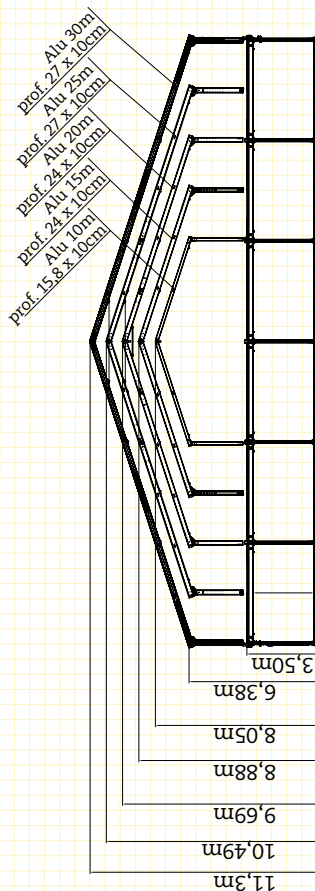
Are you looking for a luxurious tent with extra allure for your event? The multi storey tent is the perfect solution! From the upper storey, spectators will enjoy a fantastic view of your event. 2 or 3 storeys, storey tents create exceptional possibilities for welcoming your guests. A patio, restaurant or VIP-areas... it is all possible in this stylish tent.

In addition you can finish the hall as you choose amongst others with **doors**, **glass windows**, **gothic windows**, **transparent fabric**, **PVC panels**, **decoration**, **flooring**, **guttering**, **lighting**, **heating**.

Accessories



Cross section drawing



Construction

The lower storey(s) are made from a steel construction on base-plates. The standard anchoring is realised with stakes. The top storey is made from a self-supporting anodised aluminium structure supported on steel galvanised base-plates. All parts are connected with pins for quick and easy installation. The stability is ensured using wind bracing. The structure is subject to the most important international building standards (e.g. the British "Building Codes", the Germany "Prüfbuch" standard, the French "Extrait du registre de sécurité", etc.).

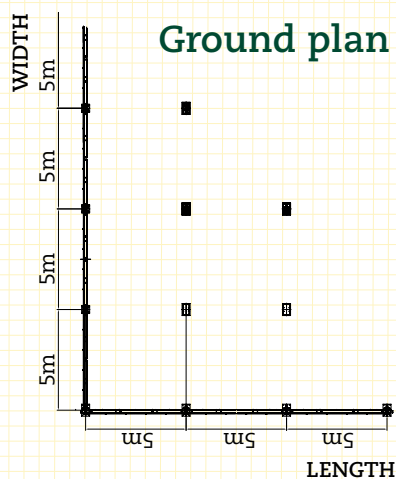
Roof and gable fabrics

Roof and gable fabrics are made from PVC-coated polyester fabric (white translucent, white non-translucent or colour). Roof and gable fabrics are slid into the keder tracks of the roof beams and stretched with tension tubes and ratchets or fabric tensioners. Flame retardant according to the French standard M2, German standard DIN 4102 B1 and British Standard BS 5438. The fabric is UV-stabilised and treated against deterioration due to rot and mildew.

Sidewalls

The sidewall fabrics are made from PVC coated polyester fabric (white translucent, white non-translucent or colour). Flame retardant according to the French standard M2, German standard DIN 4102 B1 and British Standard BS 5438. The fabric is UV-stabilised and treated against deterioration due to rot and mildew.

One sidewall of 5 m is made up of two sections of 2,5 m connected with a zip. The sidewall slides into the leg with a keder in the keder tracks. The side fabric is attached to the connection bar or ground beam at the bottom with straps and at the top the sidewall is slid into the side purlin with keder sections. This prevents the fabric from flapping in strong winds.



Technical specifications

| | | |
|-----------------|-----------|---------|
| Standard width | 10-30 m | 10-25 m |
| Standard length | Unlimited | |
| Side height | 6,38 m | 9,4 m |
| Bay distance | 5 m | |