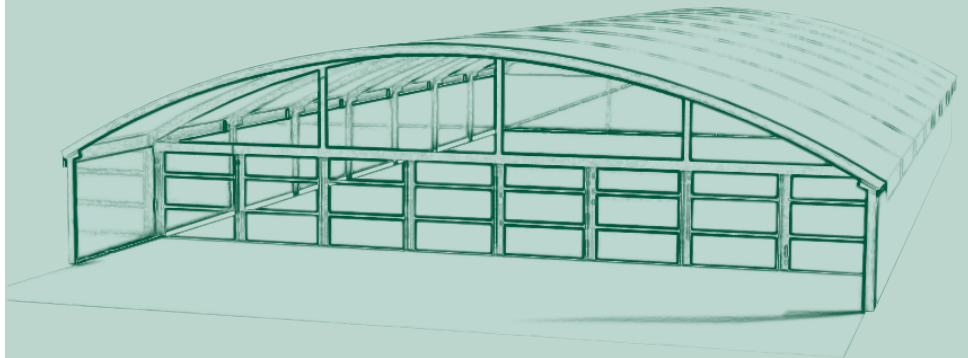


► Phoenix

- Event & Exhibition
- Tent Rental Companies



Width	20 m								
Eave height	2,8 m								



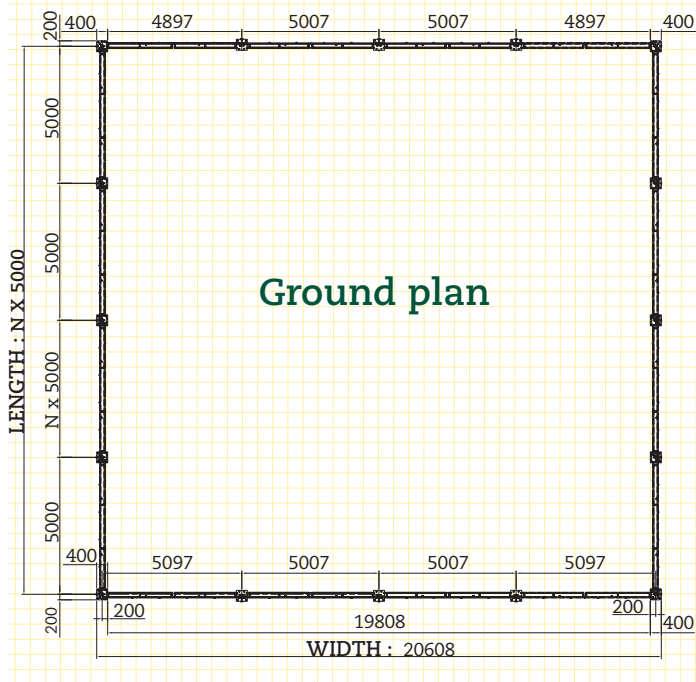
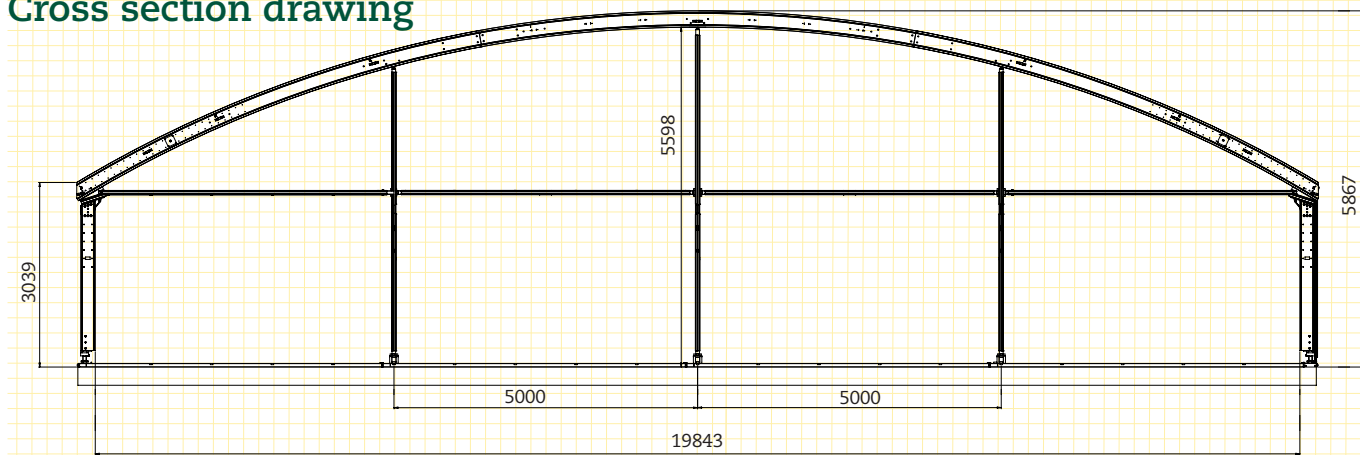
Its arched shape, free interior space and combination possibilities, make the Phoenix the epitome of versatility. A hall suited for various activities from company and private parties, trade shows and exhibitions, to sports and cultural events, in short an ideal solution!

In addition you can finish the Phoenix as you choose amongst others with **doors**, **glass windows**, **gothic windows**, **transparent fabric**, **hard panels**, **lining**, **gutters**, **flooring**, **lighting** and **heating**.

Accessoires



Cross section drawing



Ground plan

Technical specifications

Standard width	20 m
Standard length	Unlimited
Side height	2,8 m
Bay distance	5 m

Roofsheets and gables

Roofsheets and gables are made from a PVC coated polyester fabric (white translucent, white blackout or colour). Roofsheets and gables are slid into the keder tracks of the roofbeams and stretched with tension tubes and ratchets or fabric tensioners. Flame retardant according to the French standard M2, German standard DIN 4102 B1 and British Standard BS 5438. The fabric is UV-stabilised and treated against deterioration due to rot and mildew.

Construction

A self-supporting anodised aluminium construction on galvanised steel baseplates or groundbeams. Standard anchoring with stakes. All parts are connected with pins for a quick and easy installation. The stability is ensured using windbracings. The structure is calculated according to the most important international building standards.

Sidewalls

The sidewalls are made from a PVC coated polyester fabric (white translucent, white blackout or colour). Flame retardant according to the French standard M2, German standard DIN 4102 B1 and British Standard BS 5438. The fabric is UV-stabilised and treated against deterioration due to rot and mildew. One sidewall of 5 m is made up of two sections of 2.5 m connected with a zipper. The sidewall slides into the leg with keder in the keder tracks. The sidewall is attached to the connection bar or ground beam at the bottom with straps and at the top is slid into the eave purlin with keder sections. This prevents the fabric from flapping in strong winds.



Veldeman Structure Solutions ▶ Industrieterrein Vostert 1220 ▶ 3960 Bree (Belgium)

Tel.: +32 (0)89 47 31 31 ▶ Fax: +32 (0)89 47 37 77 ▶ E-mail: info@veldemangroup.be ▶ Website: www.veldemangroup.be